



E2PS

# E2GETHER

GUIDANCE MODULES

Made in Germany 

More than avant-garde technology for your beverage industry.



E2PS

TRUST & TRUTH. BLENDED.



EDERSON PASQUALI

Chief Managing Officer | Partner

•

[ep@e2ps.com](mailto:ep@e2ps.com)

“E2PS was created from our wish for autonomy and from the passion towards our activities: **applying avant-garde Engineering + planning and designing Equipment + developing and optimizing Processes + conceiving and installing Systems.**”

We know what we are talking about and we are glad to support our customers with absolute truth. Our commitment is **to listen and understand to be able to design and execute the best technological solutions for the processing of industrialized beverages**. The **E2GETHER Guidance Modules** reflect this commitment and make it available to the market in a structured and interconnected way. They also show another important goal we have: **the creation of long-lasting partnerships**.



Everything is technically and commercially sized according to your company’s goals. Come talk to me and see why this has afforded us the trust of the market”.

“ We know that  
Trust  
is earned  
when Actions  
meet  
Words. ”



FABIO WOBIDO

Chief Operating Officer | Partner

•

[fw@e2ps.com](mailto:fw@e2ps.com)

“There is a saying that trust is only built with time. This is very true. I know that because this E2PS’ way,

We want to serve you for years to come and assist you with our equipment and also with our market experience. **This is our vocation. And the only way we can achieve this is to do it always with total accuracy and assertiveness.**



It is not always the easiest and fastest route, but it is the only one we want to take. This is the essence of the E2GETHER Guidance Modules: **before we propose a solution for a demand, during consulting we analyze the path that is being taken and, when we see an inadequate decision or investment, we point it out without hesitation.** We propose the solution you need, which is not always the one you consider necessary.

**E2PS is committed with ethics, with your investment and with your success.** Work with someone who really wants to understand you, contact me.

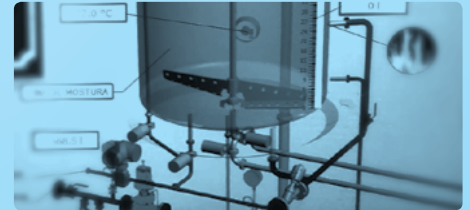
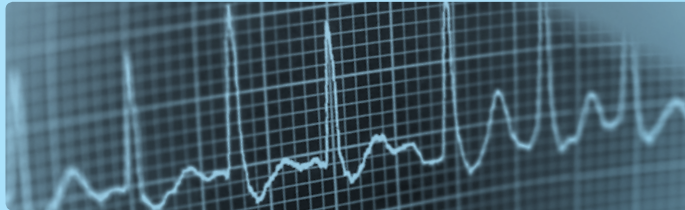
“No one sees the heart. Still we know that its perfect functioning is vital. It all starts with it. **Failure is not an option.** The preparation and homogenization of the ingredients for the industrial production of beverages is just like it. The entire process starts here! **Full-time and exact operation are equally basic premises for the operation of the entire production process!**



**TIAGO ETGES**

Chief Engineering Officer | Partner

te@e2ps.com



The E2GETHER modules bring this comprehensive view. They consider the synergy between systems that need to operate with total precision and traceability to maintain the high level of performance demanded by industrial processes. **E2PS works like that, seeing the whole. This is what we do. With excellence.**

Us getting to know each other is the first step for you to identify this work philosophy and our commitment. Contact us so then we can establish a solid trust-based relationship”.

YOUR IDEA







# YOUR QUESTIONS

WHICH WAY?  
SHOULD I TURN LEFT? RIGHT?  
SHOULD I MOVE FASTER?  
HIT THE BRAKES? WAIT?

MAKING THE RIGHT DECISION  
IS ESSENTIAL. AND THIS IS VALID  
FOR EVERYTHING.

INCLUDING YOUR IDEA.

# OUR ANSWER



## E2GETHER GUIDANCE MODULES

A GUIDE THAT BLENDS  
TRUST & TRUTH,  
OBJECTIVITY & TECHNOLOGY  
SHOWING WHERE TO GO AND  
HOW TO GET THERE.

### TOGETHER

Together we create a common  
language for effective  
communication.

Thought is fulfilled and a  
conceptual structure is created.

So together - and in close  
cooperation - your goals in the  
production of industrialized  
beverages are naturally attained.

The right way in the development and full  
installation of beverage production processes and  
systems with avant-garde technology.

There are 5 modules, designed to interact and  
create the balance you wish, according to your  
performance and profitability expectation.

E2GETHER offers and delivers balance, focusing on  
an equalized and integrated composition between:

- **PROJECT & EXECUTION**
- **INNOVATION & RELIABILITY**
- **PRODUCTIVITY & INVESTMENT**
- **TECHNOLOGICAL ACCURACY & FRIENDLINESS**
- **GERMAN TECHNICAL EXCELLENCE & INITIATIVE**

A central blue circle contains the text 'E2GETHER' in white and 'GUIDANCE MODULES' in orange below it. Five light blue curved lines radiate from the circle to the corners of a large, irregular light blue shape, dividing the space into five sections. Each section contains a numbered module description.

**E2GETHER**  
GUIDANCE MODULES

**1.**  
EQUIPMENT AND  
SERVICES WITH FULL  
ORIENTATION & SUPPLY

**2.**  
A-Z CONSULTING  
FOR NEW  
BEVERAGE  
BUSINESS

**3.**  
KEY ENGINEERING  
FOR NEW  
PRODUCTS

**4.**  
PROCESS  
OPTIMIZATION &  
PRODUCTIVITY

**5.**  
REAL TIME  
PROCESS  
MONITORING

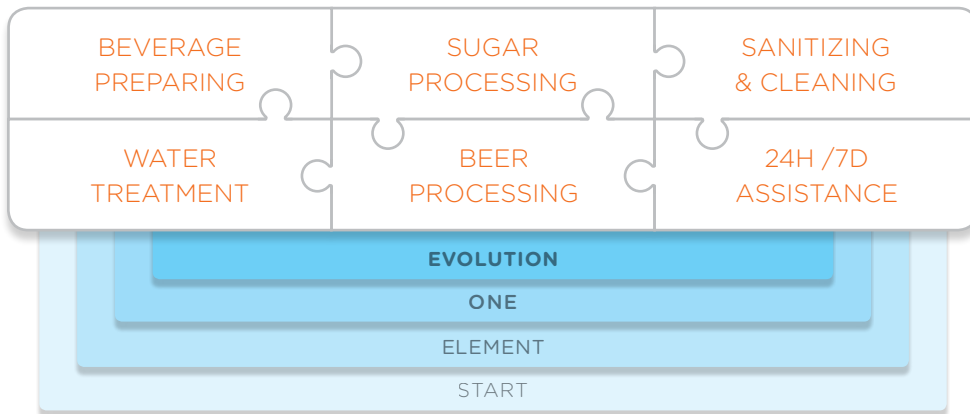


## E2GETHER GUIDANCE MODULES

### 1. EQUIPMENT AND SERVICES WITH FULL ORIENTATION & SUPPLY



- Systems
- Version



Five systems composed by modular equipment and interconnected + option of four automation levels.

One services system including Installation + Training + Maintenance + Spare Parts and Retrofitting.

Optimized to work together and ensure operation with maximum productivity.

A solution that is always suited to your level of demand, investment capacity as well as to your expansion or upgrade plan.



## E2GETHER GUIDANCE MODULES

### 2. A-Z CONSULTING FOR NEW BEVERAGE BUSINESS

TECHNICAL  
PLANNING

TIME  
PLANNING

TECHNICAL  
INFORMATION &  
SPECIFICATION

BUDGET  
COSTS



The right module for anyone who:

- wants to know the needs and particularities involved in a beverage factory.
- has defined a product line and wants to start its production.
- operates in another segment and wishes to start in the industrial beverages segment.
- has a factory and wants to make a study for a new beverage factory.



MONITORING  
INSTALLATION

PROGRAMMING  
PLANT START

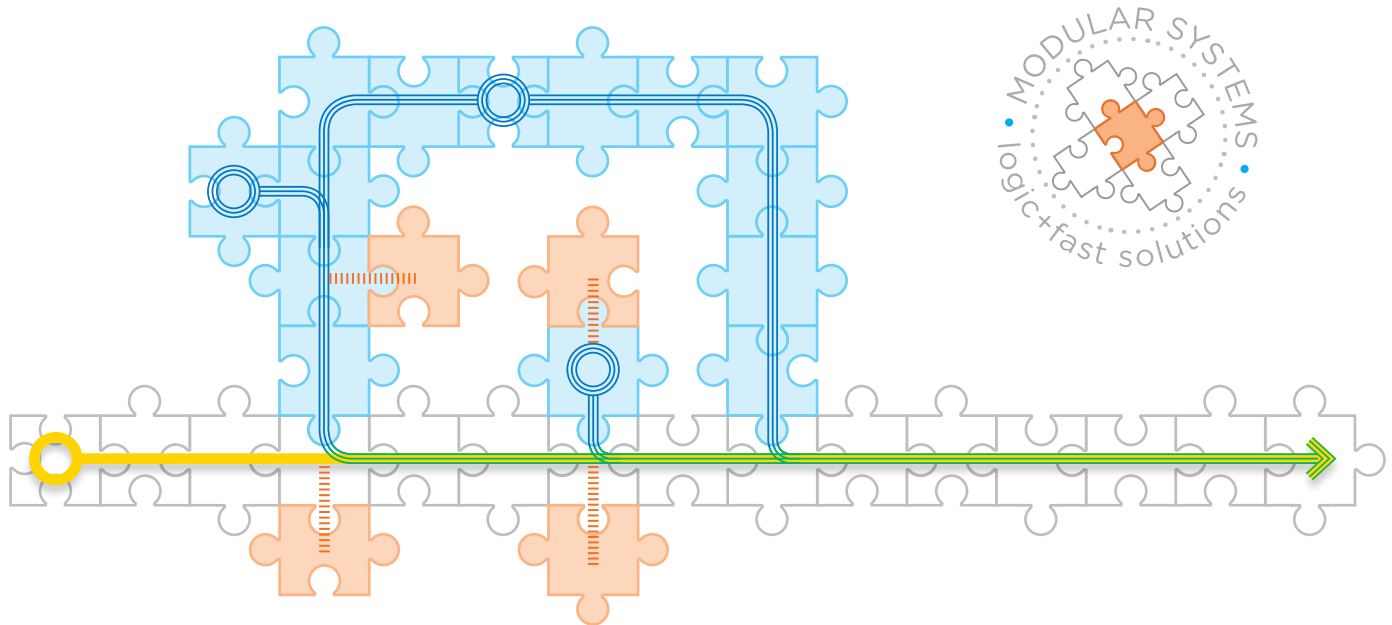
MONITORING PLANT  
AFTER INSTALLATION

TECHNICAL SUPPORT  
AFTER INSTALLATION



## E2GETHER GUIDANCE MODULES

### 3. KEY ENGINEERING FOR NEW PRODUCTS



- Current production line
- Current production flow
- New systems / equipment
- ≡ New production flow
- New monitoring points
- ||| Real-time monitoring
- ≡ Integrated production flow

Strategic company decisions require operating lines to be adapted to produce new beverages.

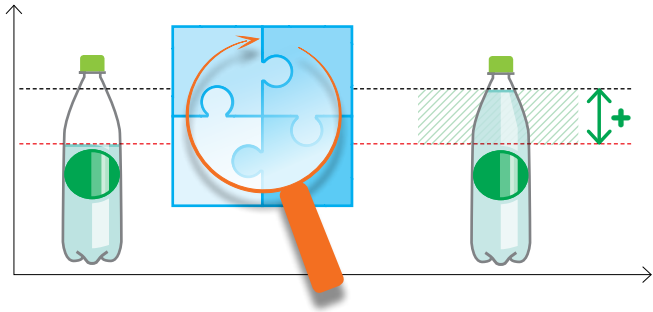
We are experts in analyzing the status of your plant and proposing a complete solution for the design, manufacturing and installation of new systems / equipment. We always consider the existing structure and the future planning, bringing them to balance.

You gain agility and savings, both generated by the modularity of our systems.



## E2GETHER GUIDANCE MODULES

### 4. PROCESS OPTIMIZATION & PRODUCTIVITY

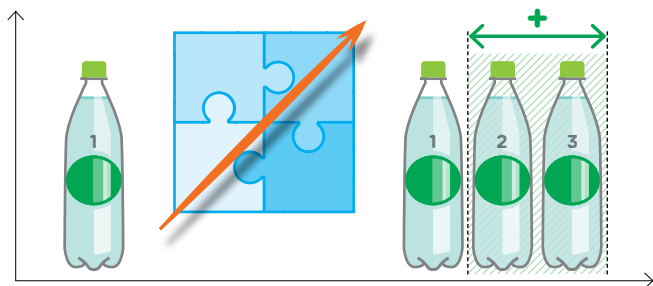


Focus on profitability. Many times, it can be broadened with adjustments and corrections in the productive process.

For that you have the **Process Optimization** module.

We check your process from end to end into detail. We detect the critical points and show the corrections and the savings generated in a thorough report.

Investments in corrections are normally absorbed quickly. The benefits + the profit stay.



Strong demand. How to take advantage of it without having to invest in a new line or plant?

With the **Process Productivity** module.

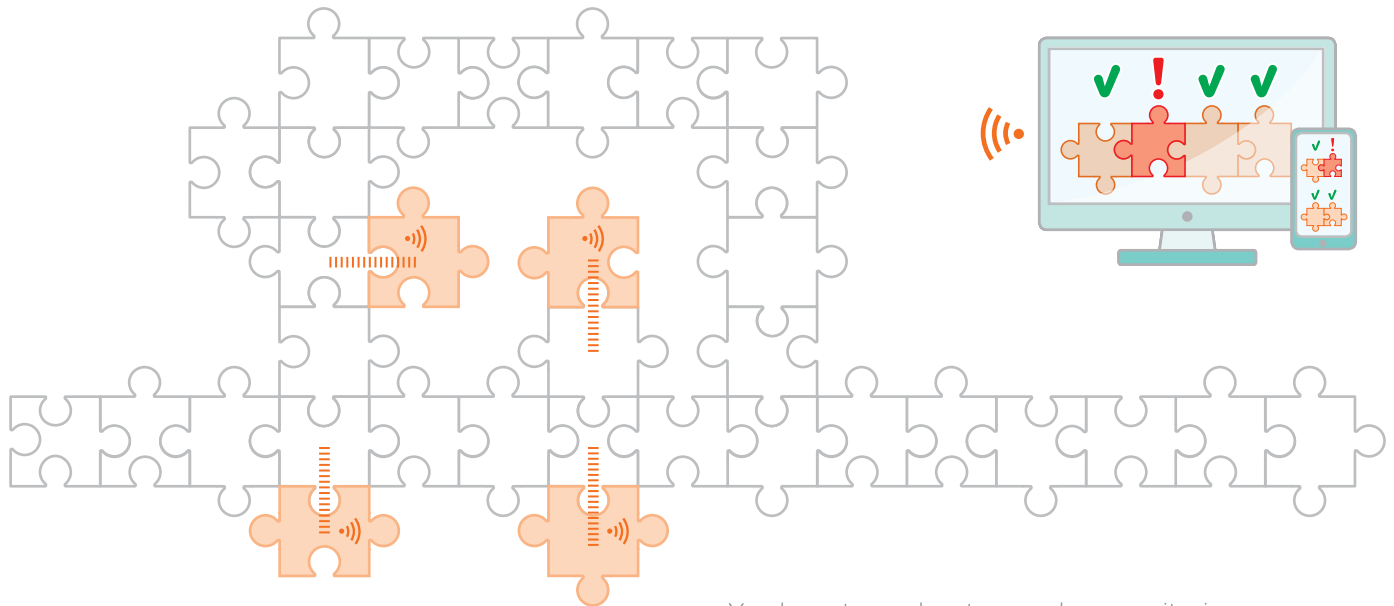
After verifying the current process and identifying the possible bottlenecks, we compare the data collected with the indicated demand. We determine the investments to expand your productivity. And we prove the payback.

Always being careful to put profitability and investment in balance with feasible solutions.



## E2GETHER GUIDANCE MODULES

### 5. REAL TIME PROCESS MONITORING

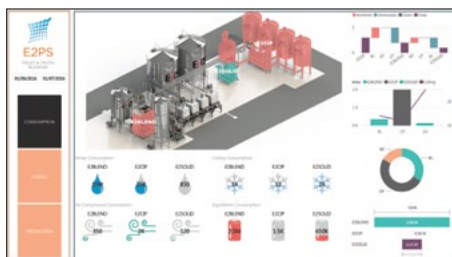


 Monitoring points

 Real-time monitoring

You have two advantages when monitoring your process' stages in real time.

Any deviations are immediately detected and you have the chance to correct them to avoid significant losses, even away from the plant.



Example of a customizable monitoring screen.

Meticulous control of inputs used - water, power, gas, steam, raw material etc. - in a way that makes it possible to continuously optimize the process by actively monitoring the final product.

This module offers you precise information for assertive decision making.



MAKE YOUR IDEA COME TRUE.



# TRUST IS BUILT BASED ON TRUTH.

Our customers  
are our partners and  
they are known  
worldwide.



We have installed  
over 4 million liters/hour in  
processing since 2001.  
This equals =



14.000.000 units/h

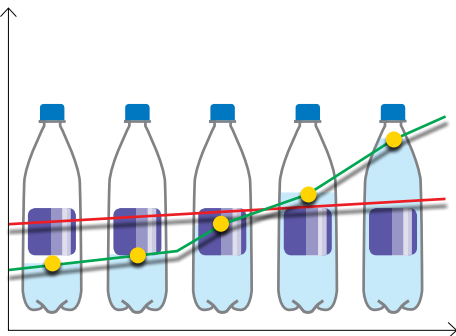
We are dedicated  
professionals who form a  
cohesive and agile team  
with strong experience.



You receive an objective  
and detailed payback analysis  
for your investment:  
clear data for you to  
have predictability and be able  
to make the right decision.



750.000 units/h



350 units/h

We value well  
solved technical details and  
we follow the GMP.  
GOOD MANUFACTURING  
PRACTICES.



WE ARE A GLOBAL  
PLAYER AND  
A KEY PARTNER OF  
YOUR BUSINESS.

We go wherever necessary.  
Call us.

Made in Germany  • Good Manufacturing Practices • [www.e2ps.com](http://www.e2ps.com)



E2PS GmbH • Eigelstein 103-113 • 50668 • Cologne • Germany • + 49 221 8017 7819 • [trust@e2ps.com](mailto:trust@e2ps.com)